

**Shaw
& Co**
ESTATE
AGENTS

OFFERS IN EXCESS OF

£573,000

Hayes End Road

Hayes, UB4 8EJ

PROPERTY SUMMARY

Immaculate 3-bedroom semi-detached family home in the sought-after Hayes End area, featuring spacious living, a large double garage, and a beautifully maintained interior throughout

3



2



1





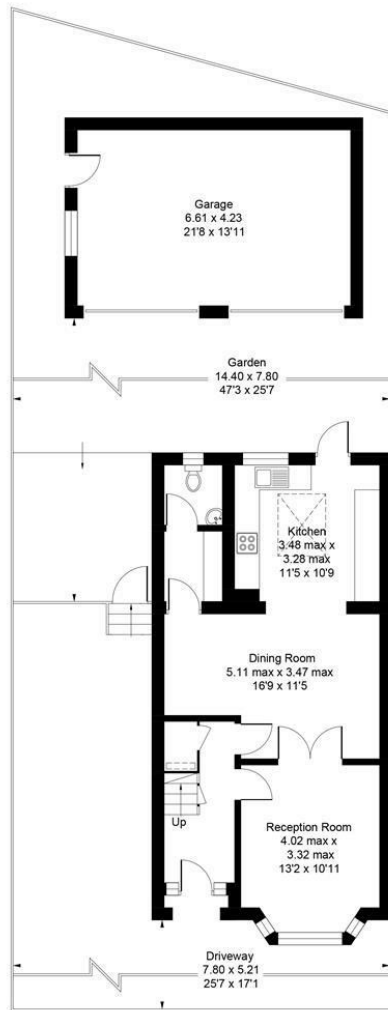
Hayes End Road, UB4

Approximate Area = 1015 sq ft / 94.3 sq m

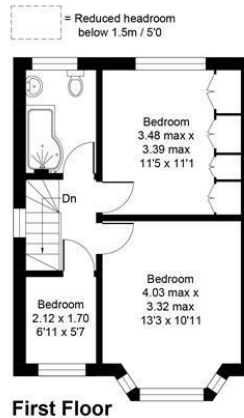
Garage = 310 sq ft / 28.8 sq m

Total = 1325 sq ft / 123.1 sq m

For identification only - Not to scale



Ground Floor



First Floor

Floor plan produced in accordance with RICS Property Measurement Standards incorporating International Property Measurement Standards (IPMS2 Residential). ©Vizion Property Marketing 2025. Produced for Allday & Miller.

ALLDAY & MILLER
estate agents

LOCAL AUTHORITY

TENURE

COUNCIL TAX BAND

VIEWINGS

By prior appointment only

Energy Efficiency Rating		Current	Potential
Very energy efficient - lower running costs			
(92 plus) A			
(81-91) B			
(69-80) C			
(55-68) D		63	76
(39-54) E			
(21-38) F			
(1-20) G			
Not energy efficient - higher running costs			
England & Wales		EU Directive 2002/91/EC	



Agents Note: Whilst every care has been taken to prepare these particulars, they are for guidance purposes only. All measurements are approximate and are for general guidance purposes only and whilst every care has been taken to ensure their accuracy, they should not be relied upon and potential buyers/tenants are advised to recheck the measurements

Shaw & Co
ESTATE AGENTS

OFFICE ADDRESS
10 Central Parade
New Heston Road
Heston
Middlesex
TW5 0LJ

OFFICE DETAILS
0208 570 7258
heston@shawandcoestates.com